

ABOUT US

MITIMPLANT Dental Systems is the product of more than 40 years of health sector knowledge and the latest technological developments and experience of the dental implant sector. With our innovative work and international partners, we are develop and produce reliable domestic dental implant as MITIMPLANT, with an understanding of product development with an international vision. We set out to be the Leader of the Industry, so our team focuses on providing excellence to our dentists and their patients with the necessary flexibility and facilitating approach.

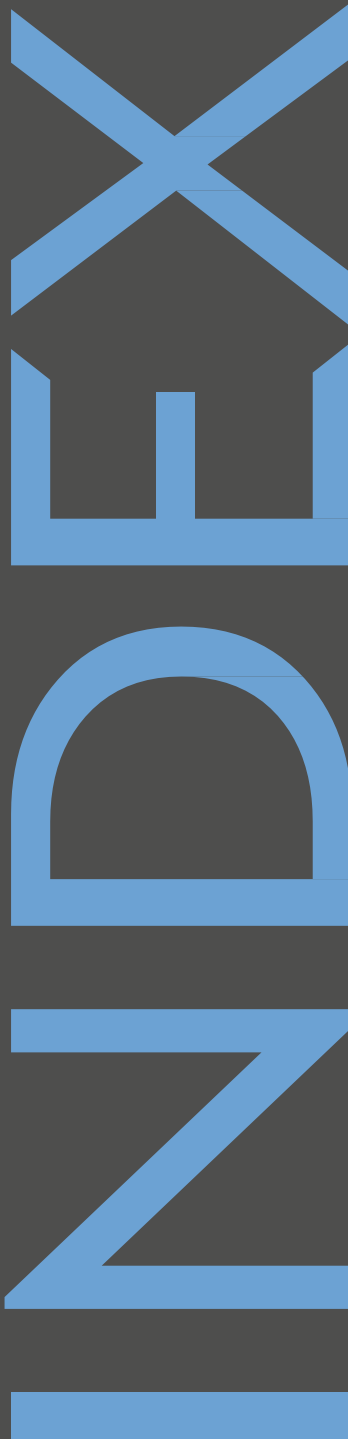
Our corporate perspective is always taking the cooperation with our dentists and business partners one step further, and we base our innovative perspective on our values, on which we form the basis of our long-term goals.

Our innovative perspective and flexibility enable us to constantly create perfecting and beneficial solutions.

We have developed the best, biocompatible and 100% Domestic Dental implants for our dentists, by combining our meticulous R&D-based studies and 39 years of health sector experience and knowledge, with world-class precision production protocol. We design, develop and introduce innovative products to increase the quality of surgical operations and provide more comfortable treatment processes.

We always work harder, produce new facilitating solutions and develop them continuously, within the framework of our open approach to change, which is the first condition of growth and progress.





<i>Research & Develeopment</i>	4
<i>Sterile Conditions</i>	4
<i>Quality Control Perspective</i>	5
<i>Traceability</i>	5
<i>SST/SLA Surface</i>	6
<i>Packaging & Labelling</i>	7
<i>Mit-Digital</i>	7
<i>Implant Structure (Features)</i>	9
<i>Mitimplant Size</i>	10
<i>Prosthetic Flow Diagram</i>	11
<i>Healing & Impression</i>	12
<i>Abutment Options</i>	13
<i>Prosthetic Flow Diagram (Multi Unit)</i>	15
<i>Multi Unit Abutments</i>	16
<i>Prosthetics for CAD/CAM</i>	17
<i>Surgical Kit</i>	18

Research & Develeopment



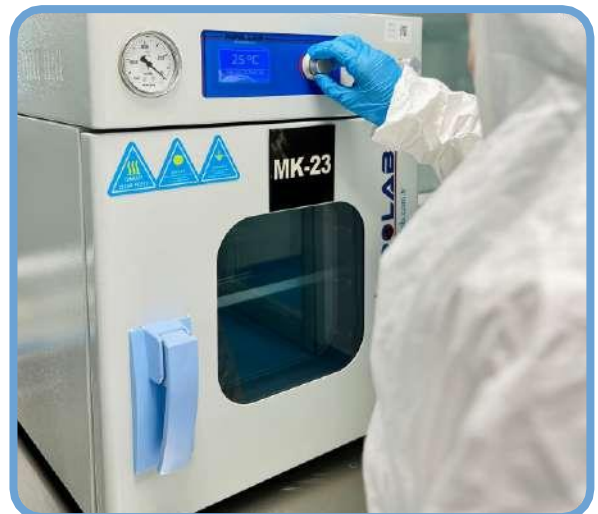
Mitimplant Dental Systems are the result of our experienced team's work on the dental industry for last decades. Our innovative solutions are carried out in partnership with international partners, advisor lecturers and market needs.

Mitimplant targets to be leading dental implant product on the field with our innovative solutions by Research & Development department.

Sterile Conditions

Mitimplant Dental Systems products are packaged in the sterile room that fulfills environment conditions.

Also the sterile room is regularly validated according to international standards. Every step of manufacturing process, conditions are monitored at periodical intervals.



Quality Control

Quality Control Department monitors all products with great attention to ensure our products meet required quality standards.

Products are cross-checked by different quality control officers with optic devices that is the latest technology with high sensitivity.

The products which do not pass the quality standards are readily eliminated.



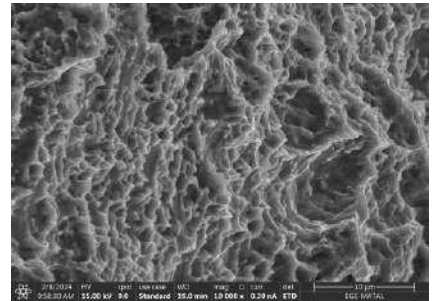
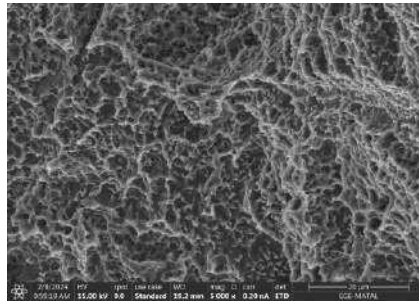
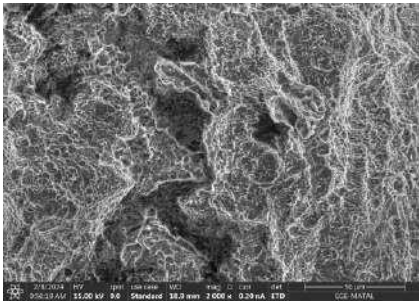
Traceability



Each product within the Mitimplant Dental Implant System range can be tracked from the early stage of production to patient.

Each product packaging has a lot number created by our software.

SST/ SLA Surface



It is a surface developed to accelerate the biological effect of cell adhesion, strengthen the osseointegration process and subsequently achieve a more successful clinical result. While the surface is obtained, it is first subjected to mechanical treatment (sandblasting with Aluminium Oxide) after the roughening process formed on the surface, chemical etching and cleaning process (Large Acid Etched) and finally the surface becomes a hydrophilic surface active with cold Argon Plasma. This increases the adhesion of osteoblastic cells and creates a highly clean surface characterized by homogeneous micro-porosity of a few microns to support the osteogenesis process.

All these factors provide the best anchorage from bone to implant and maximize the torque force required for implant removal. Therefore, all these procedures are the most effective method preferred in implantology to decrease osseointegration time and increase quality.



The packages of our products belonging to Mitimplant Dental Systems are designed to provide maximum comfort during surgery.

Labels regulated in international norms contain the most accurate information for the physician and the patient.

COLOR CODING

Different diameter groupings are provided with different color coding on the labels and tubes of the products.



MIT Digital Solutions



Our systems are available in the libraries of digital systems in the industry and with constant updates it has focused on producing innovative solutions.

Our digital R&D studies, which we carry out with our digital solution partners, are offered to the use of our physicians.



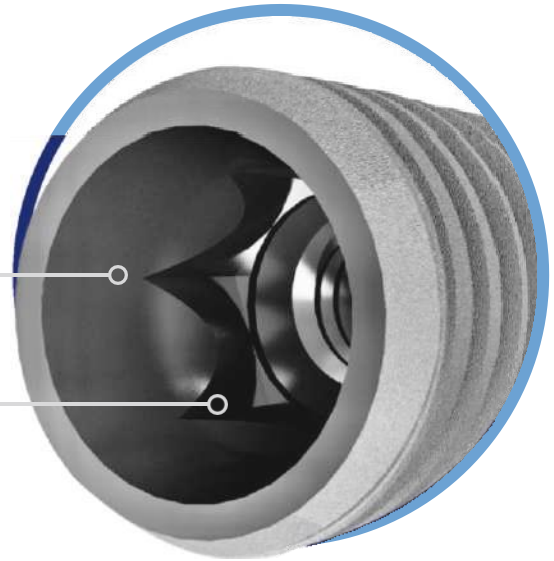
Implant Structure (Features)

Mitimplant system combine the best features in implantology.

Platform Switching
Conical Self locking
Mors Teper Connection
Natural looking Results

11° Conical Connection

Internal Hexagonal



Kemik Seviyesi
Bone Level



Self Cutting Thread

Rounded Apex

MATERIAL

Titanium Grade 4 Commercially Pure
Cold Worked
- Resistance More Than 40%



Mitimplant Size

 <p>Diameter Ø 3.5 mm</p>					
	<p>Titanium Grade 4</p>				
	<p>L 13,0 mm L 11,5 mm L 10,0 mm L 8,0 mm L 6,0 mm</p>				
	<p>Referans No / Reference No M10-3513 M10-3511 M10-3510 M10-3508 M10-3506</p>				

 <p>Diameter Ø 4.0 mm</p>					
	<p>Titanium Grade 4</p>				
	<p>L 13,0 mm L 11,5 mm L 10,0 mm L 8,0 mm L 6,0 mm</p>				
	<p>Referans No / Reference No M10-4013 M10-4011 M10-4010 M10-4008 M10-4006</p>				

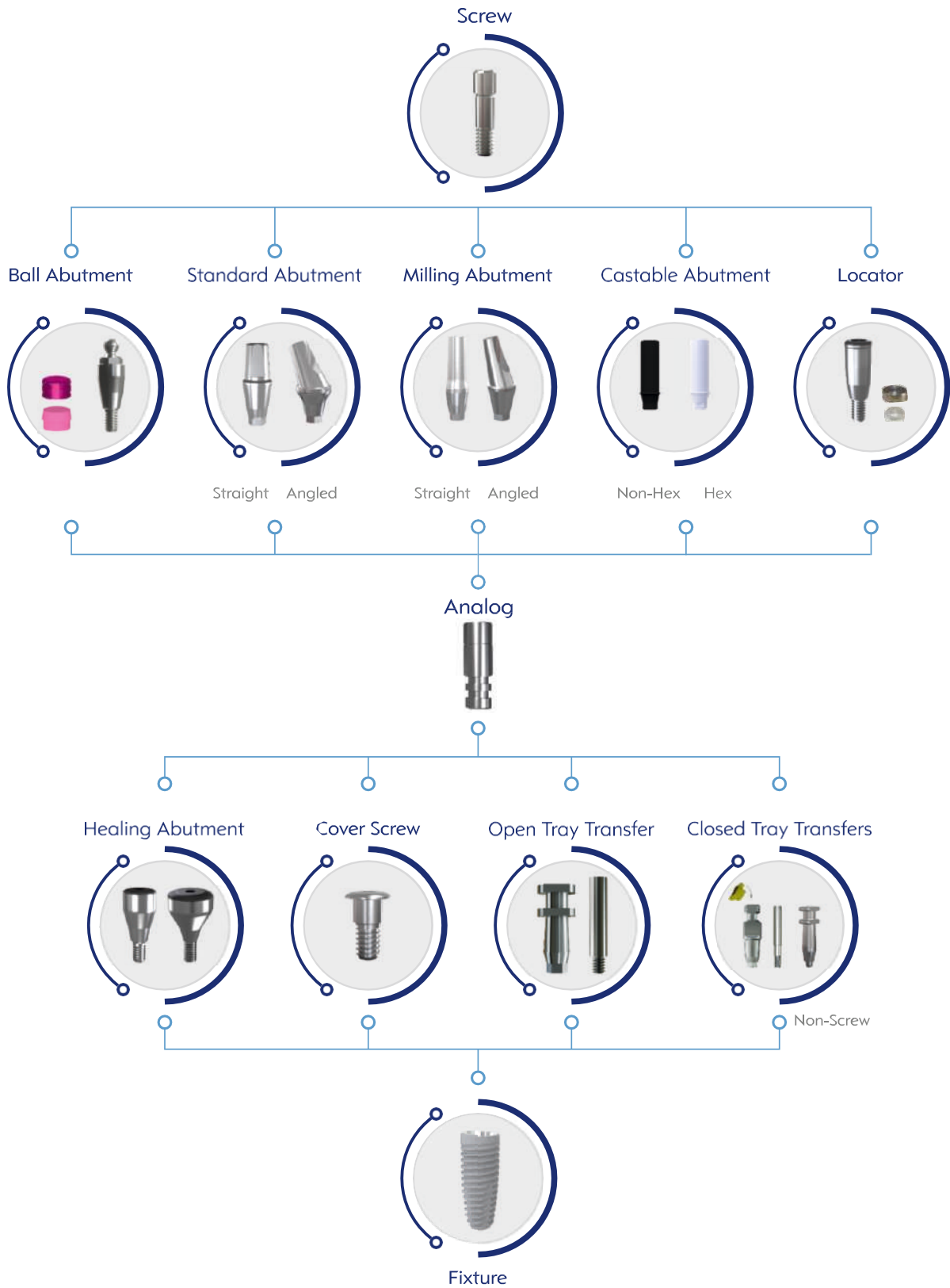
 <p>Diameter Ø 4.5 mm</p>					
	<p>Titanium Grade 4</p>				
	<p>L 13,0 mm L 11,5 mm L 10,0 mm L 8,0 mm L 6,0 mm</p>				
	<p>Referans No / Reference No M10-4513 M10-4511 M10-4510 M10-4508 M10-4506</p>				

 <p>Diameter Ø 5.0 mm</p>					
	<p>Titanium Grade 4</p>				
	<p>L 13,0 mm L 11,5 mm L 10,0 mm L 8,0 mm L 6,0 mm</p>				
	<p>Referans No / Reference No M10-5013 M10-5011 M10-5010 M10-5008 M10-5006</p>				

Renk Kodlaması Çaplar / Color Coding - Diameters

 Ø 3.5 mm
  Ø 4.0 mm
  Ø 4.5 mm
  Ø 5.0 mm

Prosthetic Flow Diagram



Healing & Impression

Ø 4.5 mm

Gingiva Former



Titanium Grade 5	2 mm	3 mm	5mm	7 mm	9 mm
Referans No / Reference No	M30-GF4520	M30-GF4530	M30-GF4550	M30-GF4570	M30-GF4590

Ø 5.5 mm

Gingiva Former



Titanium Grade 5	2 mm	3 mm	5mm	7 mm	9 mm
Referans No / Reference No	M30-GF5520	M30-GF5530	M30-GF5550	M30-GF5570	M30-GF5590

ANALOG

Analog



Titanium Grade 5	Digital Analog	Standard Analog
Referans No / Reference No	M32-DLA	M32-SLA

TRANSFER

Tray Transfer - Ölçü Post

Open Tray Transfer Short and Long

Closed Tray Transfer Short and Long

Titanium Grade 5	Open Tray-Short	Open Tray-Long	Closed Tray-Short	Closed Tray-Long
Referans No / Reference No	M31-OTS	M31-OTL	M31-CTS	M31-CTL

Abutment Options

With its wide range of prosthetic products, Mitimplant Systems provide great comfort for dentists and laboratories.

Regular Abutment

Ø 4.5 mm 30 Ncm



Titanium
Grade 5

1 mm

2 mm

3 mm

4 mm

Referans No / Reference No

ME21-004510

ME21-004520

ME21-004530

ME21-004540

Regular Abutment

Ø 5.5 mm 30 Ncm



Titanium
Grade 5

1 mm

2 mm

3 mm

4 mm

Referans No / Reference No

ME21-005510

ME21-005520

ME21-005530

ME21-005540

Angled Abutment

Ø 4.5 mm 15° 30 Ncm



Titanium
Grade 5

1 mm

2 mm

3 mm

4 mm

Referans No / Reference No

ME21-154510

ME21-154520

ME21-154530

ME21-154540

Angled Abutment

Ø 4.5 mm 25° 30 Ncm



Titanium
Grade 5

1 mm

2 mm

3 mm

4 mm

Referans No / Reference No

ME21-254510

ME21-254520

ME21-254530

ME21-254540

Angled Abutment

Ø 5.5 mm 15° 30 Ncm



Titanium
Grade 5

1 mm

2 mm

3 mm

4 mm

Referans No / Reference No

ME21-155510

ME21-155520

ME21-155530

ME21-155540

Angled Abutment

Ø 5.5 mm 25° 30 Ncm



Titanium
Grade 5

1 mm

2 mm

3 mm

4 mm

Referans No / Reference No

ME21-255510

ME21-255520

ME21-255530

ME21-255540

Abutment Options

Ball Abutment

Ball Ø 2,25 mm 30 Ncm



Titanium
Grade 5

Referans No / Reference No

1 mm 2 mm 3 mm 4 mm 5 mm 6 mm 7 mm

M24-B0010 M24-B0020 M24-B0030 M24-B0040 M24-B0050 M24-B0060 M24-B0070

Locator

30 Ncm



Titanium
Grade 5

Referans No / Reference No

1 mm 2 mm 3 mm 4 mm 5 mm 6 mm 7 mm

M25-LOC10 M25-LOC20 M25-LOC30 M25-LOC40 M25-LOC50 M25-LOC60 M25-LOC70

Freze Abutment

30 Ncm



Titanium
Grade 5

Tipi / Type

Referans No / Reference No

9 mm-0° 12 mm-0° 15 mm-0° 12 mm-0° 12 mm-0° 12 mm-15° 12 mm-25°

Standart Standard Standart Standard Standart Standard İnce Thin Kalın Thick Standart Standard Standart Standard

M20-004509 M20-004512 M20-004515 M20-004012 M20-005512 M20-154512 M20-254512

Castable Abutment Plastic

30 Ncm



POM-C

Rotasyonlu / Rotational

Antirotasyonlu / Antirotational

Referans No / Reference No

M35-CAR

M35-CAA

Castable Abutment Titanium

30 Ncm



Titanium
Grade 5

Referans No / Reference No

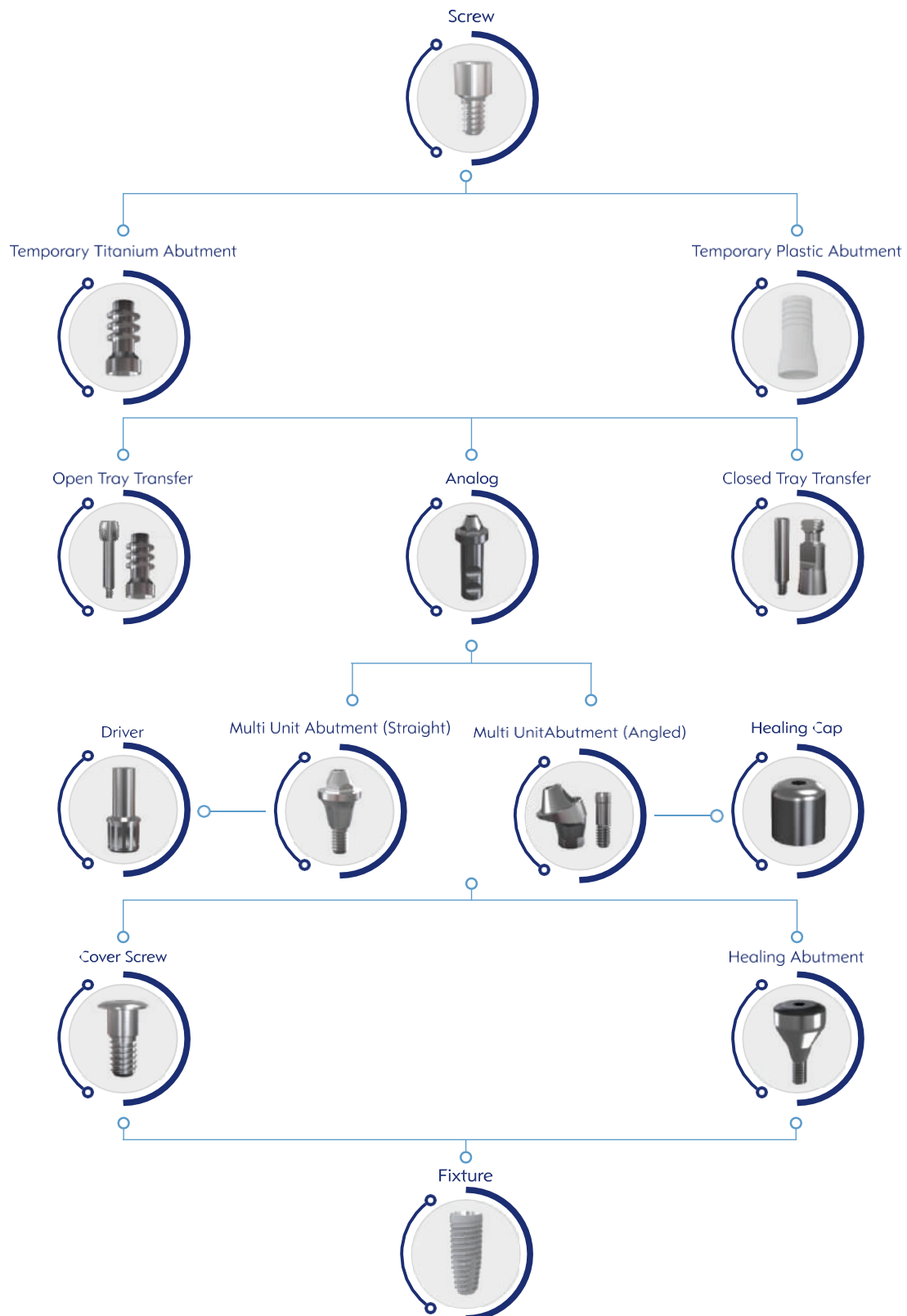
Rotasyonlu / Rotational

Antirotasyonlu / Antirotational

M29-CAR

M29-CAA

Prosthetic Flow Diagram (Multi Unit)



Multi Unit Abutments

Multi Unit Abutment 30 Ncm



Titanium
Grade 5

	1 mm 0°	2 mm 0°	3 mm 0°	4 mm 0°	5 mm 0°	7 mm 0°
Referans No / Reference No	M23-004510	M23-004520	M23-004530	M23-004540	M23-004550	M23-004570

Antirotational Options 30 Ncm



Titanium
Grade 5

	1 mm 0°	3 mm 0°
Referans No / Reference No	M23-004510A	M23-004530A

Angled Options 30 Ncm



Titanium
Grade 5

	1 mm 17°	3 mm 17°	1 mm 30°	3 mm 30°
Referans No / Reference No	M23-174510	M23-174530	M23-304510	M23-304530

Temporary Abutment 20 Ncm POM-C



POM-C

	Titanium	Plastic	Plastic Hex
Referans No / Reference No	ME20-ETA	ME35-EAACA	ME35-EACA

Multi Unit Healing & Impression



Multi Unit Open
Tray Transfer



Multi Unit Closed
Tray Transfer



Multi Unit
Laboratory Analog



Multi Unit
Gingiva Former



Multi Unit
Abutment Driver

Titanium
Grade 5

Referans No / Reference No	ME31-EATOT	ME31-EATCT	ME32-EALA	ME30-EGF	-
----------------------------	------------	------------	-----------	----------	---

Scan Body

*Exocad *Dental Wings



Titanium
Grade 5

Scan Body

Referans No / Reference No

M36-SB

Digital Analog

*Exocad *Dental Wings



Titanium
Grade 5

Digital Analog

Referans No / Reference No

ME32-DLA

Ti-Base Abutment

*Exocad *Dental Wings 30 Ncm



Titanium
Grade 5

1 mm

Standart

Referans No / Reference No

M26-TB10

M26-TB30



Surgical Kit

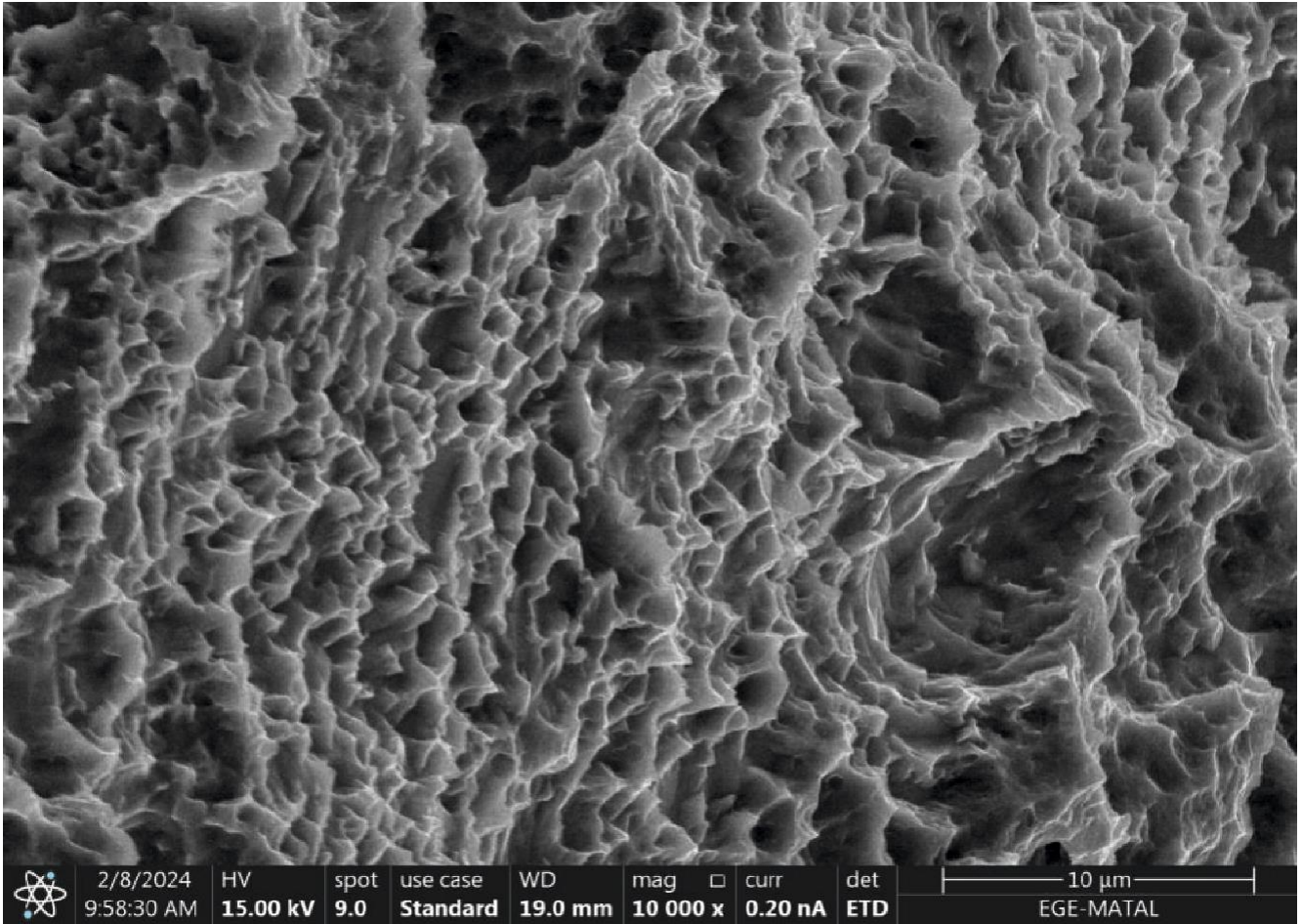
The Mitimplant Surgical Kit is designed to meet all the needs of our physicians and provides comfort of use.

There are coloring and product groupings in the surgical kit, which its design and content belongs to Mitimplant.

Kit Pieces

Start Drill
Drill Extender
Depth Gauge
Final Drills
Cortical Drills
Parallel Pins
Hex Drivers
Implant Adapters
Ratchet







MİTCON MEDİKAL İMPLANT TEKNOLOJİ
İÇ VE DIŞ TİCARET LİMİTED ŞİRKETİ

www.mitimplant.com

